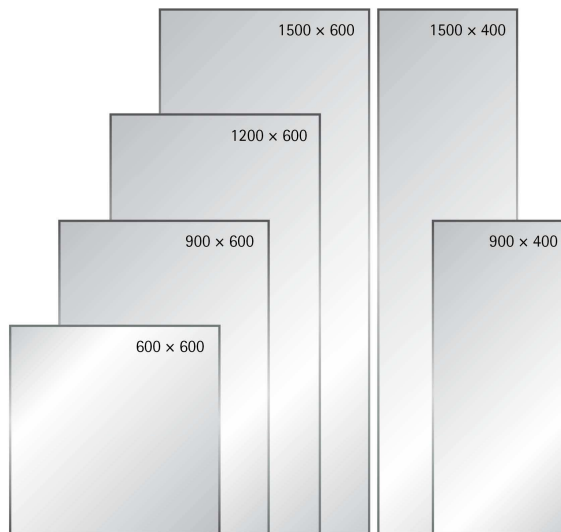


## Welltherm Infrared Heating Element

Type RA / RL



### Product Properties:

Model Number	<b>RL0606 / RA0606</b>	<b>RL 0609 / RA0609</b>	<b>RL0612 / RA0612</b>	<b>RL0615 / RA06 15</b>	<b>RL0409 / RA0409</b>	<b>RL0415 / RA0415</b>
<b>Dimension</b>	600mm x 600mm x 30mm / 603mm x 603mm x 30mm	600mm x 900mm x 30mm / 603mm x 903mm x 30mm	600mm x 1200mm x 30mm / 603mm x 1203mm x 30mm	600mm x 1500mm x 30mm / 603mm x 1503mm x 30mm	400mm x 900mm x 30mm / 403mm x 903mm x 30mm	400mm x 1500mm x 30mm / 403mm x 1503mm x 30mm
<b>Power</b>	380 W	580 W	780 W	930 W	360 W	630 W
<b>Voltage</b>	230V- 50-60Hz					
<b>Current</b>	1,7 A	2.5 A	3,4 A	4,3 A	1,6 A	2,7 A
<b>Connection lead</b>	1,5m / 3m cable with plug					
<b>Glass</b>	4 mm special glass maximum surface temperature 120°C					
<b>Frame</b>	Without frame / <a href="#">Aluminum frame</a>					

## Contents

Introduction .....	3
General Information .....	3
Intended use .....	3
Waste management.....	4
Scope of delivery.....	4
Safety advice .....	5
Cleaning and care.....	6
Terms of guarantee.....	6
Installation .....	7

## Introduction

Dear customer,

Thank you very much for purchasing our product.

This Welltherm infrared heater was developed and produced carefully.

In this manual you will find important information on how to start running your Welltherm infrared heater.

The Welltherm infrared heater will satisfy you by easy installation, flexibility in mounting and it is maintenance free.

Please read this manual carefully before you get started for your safety.  
Hold this manual in reach and don't forward the infrared heater without this manual!

**Thank you for your trust.**

## General Information

The heating element will not work as a conventional convection heater for it uses the infrared heat. When energize the heater for the first time the cold surroundings (ceiling, floor, furniture, walls) have to be heated up first. If you will not get a pleasant temperature directly please hold the heater energized until you will get a convenient indoor climate. This process can last some hours up to some days. When all solid frames are warmed up there will be a comfortable temperature in the room. With this condition the turn on time of the heater can be reduced to minimum.

For an efficient and effective control of your Welltherm infrared heater we recommend the use of our quality wireless thermostats. Please contact us for further information.

## Intended use

The Welltherm infrared heating panels are due to be used as wall or ceiling heater (see first side).

Please note that the notice of this manual is part of the intended use.

Please don't use the heater for outdoor purposes. Also the heater is not suitable for rooms where it is exposed to water and for all applications which are not explicitly named intended use.

The Welltherm infrared panel and the power outlet must not be mounted in the protection zone 0, 1, 2 of plumbed rooms.

## Waste management



Please depollute the package material and the device according to its specification. Electrical equipment contents resources as also polluting materials. Therefore it has to be disposed of as hazardous waste.

Follow your regional regulations.

## Scope of delivery

The delivered contents consist on heating panel, drilling template and standard mounting set:

4 x Spax screws



4 x dowel UX6



1 x drilling template



The delivered dowels and screws are suitable for normal brickwork made of beton, clay bricks and lime stone. With different brickwork the suitability of the fixation material has to be ensured. When you are not sure about that please get in touch with a specialized dealer for towels and screws.

For mounting the heater on the ceiling a special ceiling mount set is optional available.

### Ceiling mount set (optional)

4 x washers



4 x Holders



## Safety advice

1. Welltherm infrared heating panels are designed for use with an AC voltage 230 Volt, 50 Hz.
2. If you intend to install more than one heating element please contact an electrically skilled person!
3. The heater must not be covered (for example by textiles or similar)!



**ATTENTION: Danger of overheating and fire hazard!**

4. Welltherm infrared heating panels are equipped with a temperature limiter which will switch the panel off at higher temperatures. It will switch on again when the panel is cooled down.
5. Welltherm infrared heating panels must not be positioned directly under a wall outlet.
6. Welltherm infrared heating panels will not withstand higher humidity rates.
7. It has to be secure that the electrical circuit of the panel heater can be de-energized by switch, fuse or thermostat at any time.
8. The minimum distance to other objects should be 400mm on the front and 200mm on the sides.
9. For mounting the Welltherm infrared panel heaters to brick walls or stone walls use the delivered assembly materials. For mounting the infrared panel heaters to different fixation basics please use suitable special towels and screws which fulfil the demands on load capacity. For ceiling mount please use towels and screws that are suitable for fire protection requirements.
10. The Welltherm infrared panel heater must be remounted, cleaned and transported in cold condition only.
11. The panel heating element must not be used by persons (including children) with limited physical or mental capabilities without a supervisor. Children will never realize the danger on electrical devices. For this reason don't let your children without supervision with the panel heater. Please position the panel heater in a way that it will be out of the reach of children.
12. The Welltherm infrared panel heater must not be opened, modified or repaired by the user. Repairs can only be executed by the specialized staff of company Welltherm GmbH.
13. The front glass of the panel heater consists of ESG (security glass). This is a special mechanically stabilized glass, which will break in small, edgeless pieces. Nevertheless the mounting location should be chosen in that way that persons will not get in danger by a possible break on the glass.

**Attention: Avoid stressing the glass mechanically!**

When the glass is damaged

- Disconnect the heater and don't put it into operation again!
- Dismount the heater immediately to reduce the danger on being hurt by down falling parts!

## **Cleaning and care on Welltherm infrared panel heaters**

A frequent cleaning of the panel heater will ensure faultless operation and a long lifetime circuit of your infrared panel heater. Please switch off the heater and cool it down to room temperature before you clean the surface. For cleaning use a wet cleaning cloth or glass cleaner. Don't use any abrasive powder cleaner or furniture polish for this will damage the surface.

## **Terms of guarantee**

We will offer you a 60 month guarantee beginning with the date of the invoice or shipping note. Within this period we will regulate all faults caused by material or production by repair or refund of the defect parts. The guarantee will only be accepted when the heating panel was properly treated. Additional claims are explicitly excluded! The guarantee will only include the repair/refund of the infrared heating panel. We will take no responsibility on scratches on glass or frames after the start of operation. Also we will give no guarantee on the durability on the colours. We will not assume liability for damages caused by kicks, wrong handling and humidity or by external treatment.

Clicking noises caused by thermal expansion or by wall unevenness are no reason for complaints and will not impact the heating function.

Optical distortions on the sides of the mirror heating elements are technical caused and no reason for complaint.

In case of guarantee the infrared heating element has to be sent to our head office. As an attachment you have to add the invoice or the shipping note and a detailed description of the defect and use a suitable package.

### **Address:**

Welltherm GmbH  
Königsberger Straße 12  
58511 Lüdenscheid  
Germany

## Installation

Please find the optimal place of installation before you start to mount the Welltherm infrared panel heater.

Ensure that nothing will disable the function of the infrared waves and that all safety distances comply with our guidelines (see chapter “safety advice”).

The Welltherm infrared heaters will only heat up solid materials which will also reflect the heat back to other solid materials. It is recommended to mount the infrared panel in a way that it will directly ray on the persons. Please find the additional advices in the text before. After having chosen the area for mounting you have to start the mounting process as follows:

### **Step 1:**

Deposit the packed Welltherm panel on the floor so that the label is on the upper side of the carton. Now open the cover plate carefully. Lift the infrared heater on the side and take the drilling template out (it is under the panel). To reduce the danger of damages please open the heater package in the room where you intend to install the heater. Note that an exact positioning of the screws is the basic for the simple and trouble-free assembly.

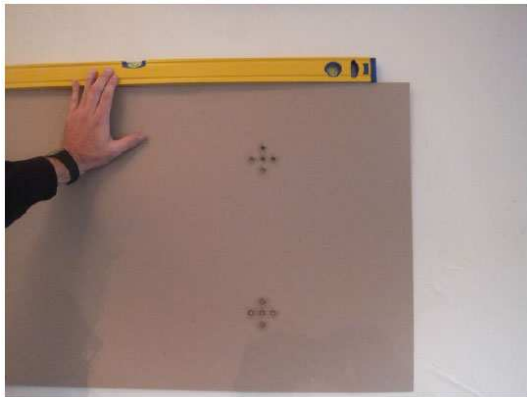
### **Important:**

The drilling template has 5 drills for marking. Depending on the orientation of the heating element the upper drills are relevant for wall mounting. The central drills are the markings for the optional ceiling mount holders.

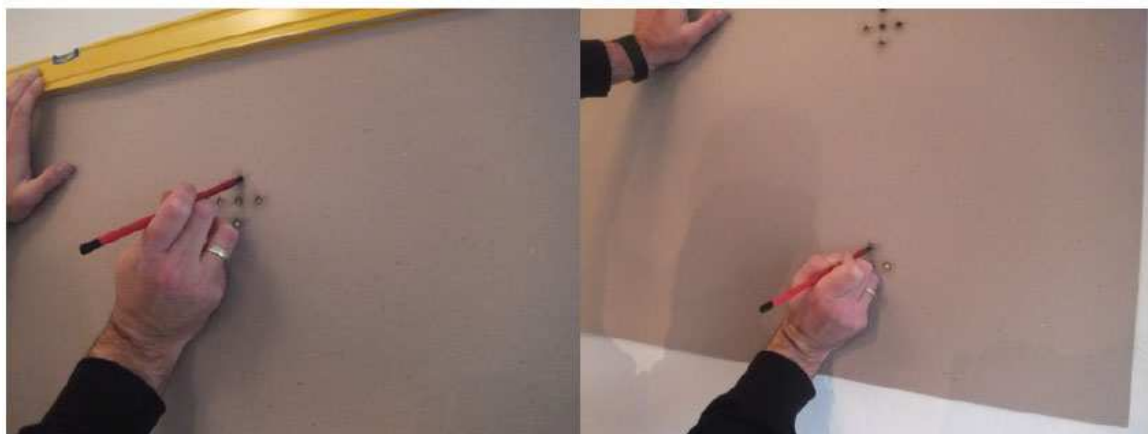
For marking the holes the drilling template is provided with cuttings.



**Step 2:** Hold the drilling template on the wall/ceiling and orientate it by using a water level.



**Step 3:** Mark the 4 drill positions  
(Please note that only the upper holes of the drilling template are relevant for wall mounting).



**Tip:** Before drilling the holes please check if tubes or wires are present in this area. Use a suitable metal detector for that.

**Step 4:** Drill the 4 holes by using a  $\varnothing 6$ mm drill.



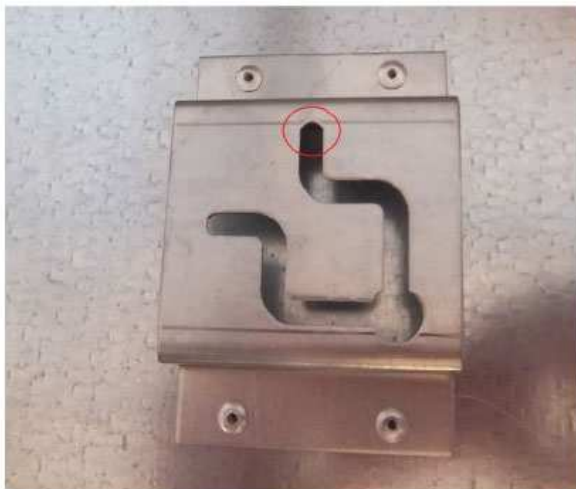
The depth of the holes should not differ much from the dowel length. To ensure this demand please mark the drill or use a depth stop. To avoid the formation of dust it is recommended to use a vacuum cleaner simultaneously.



**Step 5:** Push the dowels in the holes and screw the screws in.



**Step 6:** Hang the heater to the 4 screws. The heating panel has to be moved on the wall in a way that the screw will be positioned on the upper point of the groove (red marked circle in the picture below).



**Important:**

Although the thermal insulation of the infrared panel heater is good there will be higher temperatures also on the backside of the panel. If the heater is too close to the wall or ceiling there could be a heat accumulation on the back plate. The mounting distance of 23mm must not be under run. The continual airflow behind the heater should be guaranteed.



**Step 7:** Congratulation! The heater is mounted completely and is ready for use now.  
The plug can be inserted.



We recommend the use of wireless thermostats to optimize the efficiency and to reduce the consumption costs.

Please contact us for further information.

We wish you a lot of fun with your Welltherm infrared heating panel.

**Kind regards**  
Welltherm- Team